



# MONTHLY MEMBERSHIP PROGRESS REPORT

District 39 E

Results as of: 05/31/2018

GMT: HOWARD HUDSON

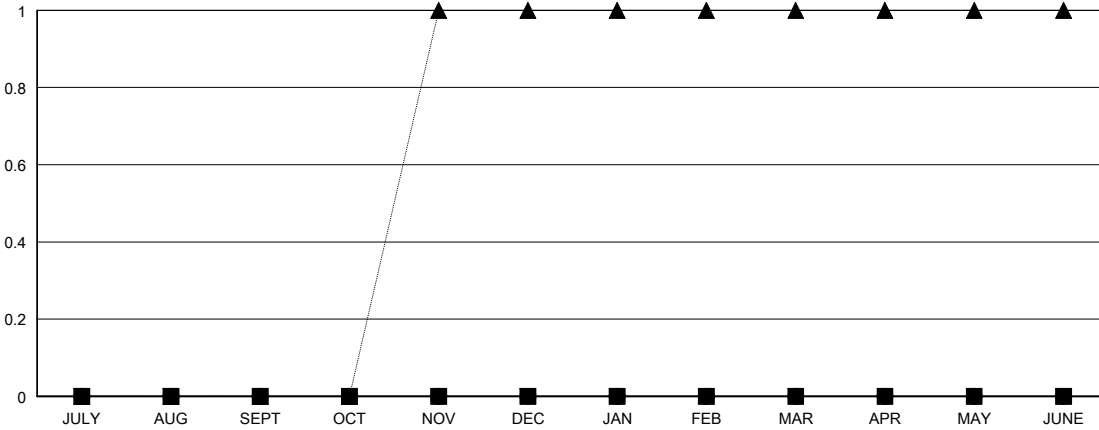
LOCATION IDAHO

GMT CA

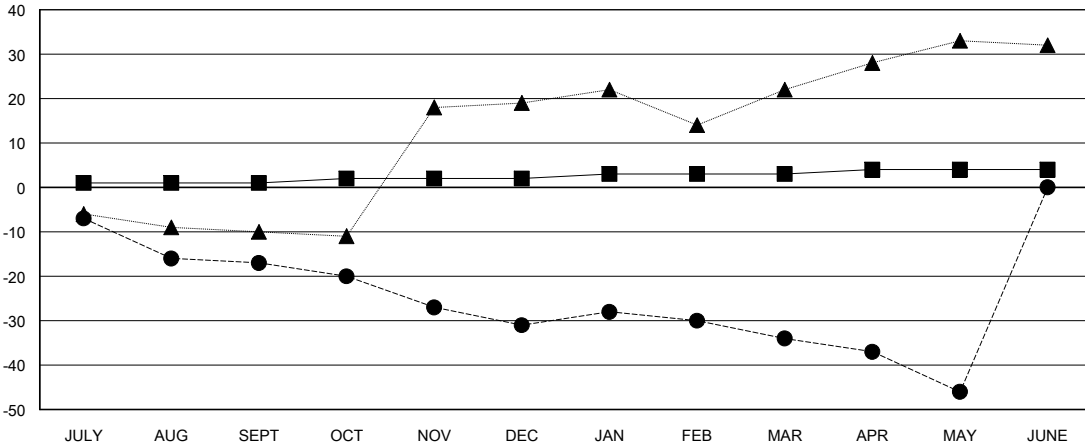
Clubs			
RESULTS FOR 2017-2018			
QUARTER	NEW CLUB GOAL	NEW CLUBS	DROPPED CLUBS
JULY/AUG/SEPT	0	0	1
OCT/NOV/DEC	0	0	1
JAN/FEB/MAR	0	0	0
APR/MAY/JUNE	0	0	0

Members			
RESULTS FOR 2017-2018			
QUARTER	MEMBER GROWTH NET GOAL	MEMBER GROWTH ACTUAL	DROPPED MEMBERS ACTUAL (including transfers)
JULY/AUG/SEPT	1	4	19
OCT/NOV/DEC	1	9	22
JAN/FEB/MAR	1	9	12
APR/MAY/JUNE	1	6	18

GOALS AND ACTUAL NEW CLUBS CUMULATIVE



GOALS AND ACTUAL MEMBERS CUMULATIVE



DROPPED CLUBS: 2	10 CLUBS OF 26 ADDED 1 OR MORE NEW MEMBERS	<u>GENDER DISTRIBUTION</u> MALE 283 (60.73%) FEMALE 183 (39.27%) Women Percentage Fiscal Year Goal: 43%
<u>DROPPED MEMBERS</u> DECEASED 6 CLUB CANCELLED 15 OTHER 50 TOTAL 71	<a href="#">CLICK HERE FOR CUMULATIVE MEMBERSHIP DATA</a>	TOTAL FAMILY UNIT MEMBERS 151 FAMILY MEMBERS PAYING HALF DUES 81